

DETTAGLI

- Foderato
- 2 tasche
- 4 bottoni 4 fori
- Fascette regolabili

COLORE

000 Nero

TESSUTO

100% poliestere
160 g / m²

TAGLIE

XS ÷ 4XL
Regular Fit



Le misure indicate si riferiscono alle taglie **S** per i capi femminili, **L** per i capi maschili. Per i capi a taglia unica le misure indicate sono effettive.

COLORI DISPONIBILI



000 Nero

TABELLE TAGLIE
E CORRISPONDENZE

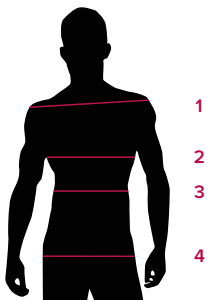
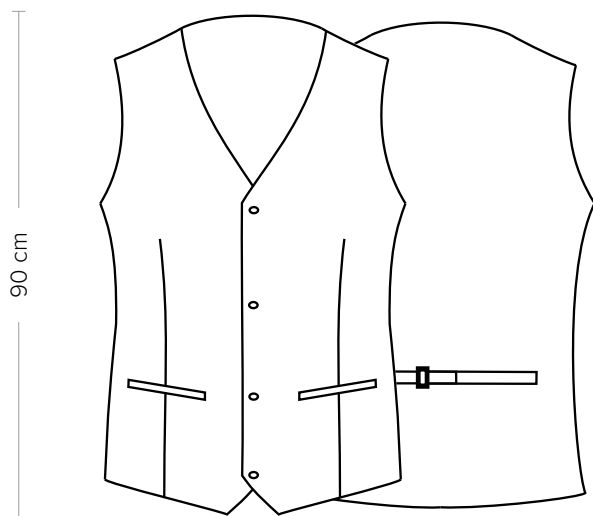


TABELLA ST-E3 SLIM FIT

| TAGLIA | XS | S | M | L | XL | XXL | 3XL | 4XL | 5XL |
|---------------------------------|-------|-------|-------|--------|---------|---------|---------|---------|---------|
| 1 - SPALLE | | | | | | | | | |
| 2 - TORACE circonferenza | 85-91 | 91-95 | 95-99 | 99-105 | 105-111 | 111-119 | 119-127 | 127-137 | 137-147 |
| 3 - VITA circonferenza | 82-87 | 87-91 | 91-95 | 95-101 | 101-107 | 107-115 | 115-123 | 123-133 | 133-143 |
| 4 - BACINO circonferenza | 82-88 | 88-92 | 92-96 | 96-102 | 102-108 | 108-116 | 116-124 | 124-134 | 134-144 |

GUIDA ALLE TAGLIE **1)** Prendere le misure anatomiche (corpo con abbigliamento intimo) senza stringere mantenendo ben teso il metro. Nota: nel caso vogliate indossare dei camici già con dell'abbigliamento sotto prendete le misure già abbigliati. **2)** Nel caso tra le misure prese vi fosse una misura a cavallo fra 2 taglie vi consigliamo di prendere quella più grande. **3)** Le misure della tabella sono espresse in centimetri.



DETAILS

- Lined
- 2 pockets
- 4 buttons with four-holes
- Adjustable buckle

SIZES
XS ÷ 4XL
Regular Fit

COLOURS

000 Black

FABRIC

100% polyester
160 g / m²



The measures indicated refer to sizes **S** for women, **L** for men. For one-size-fits-all garments, the measurements indicated are effective.

AVAILABLE COLOURS



000 Black

SIZE TABLES
AND CORRESPONDENCES

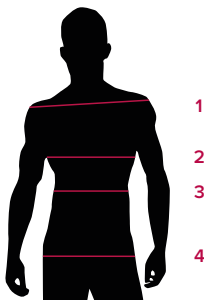


TABLE ST-E3 SLIM FIT

| SIZE | XS | S | M | L | XL | XXL | 3XL | 4XL | 5XL |
|--------------------------------|-------|-------|-------|--------|---------|---------|---------|---------|---------|
| 1 - SHOULDERS | | | | | | | | | |
| 2 - CHEST circumference | 85-91 | 91-95 | 95-99 | 99-105 | 105-111 | 111-119 | 119-127 | 127-137 | 137-147 |
| 3 - WAIST circumference | 82-87 | 87-91 | 91-95 | 95-101 | 101-107 | 107-115 | 115-123 | 123-133 | 133-143 |
| 4 - HIPS circumference | 82-88 | 88-92 | 92-96 | 96-102 | 102-108 | 108-116 | 116-124 | 124-134 | 134-144 |

SIZE GUIDE **1)** Take the anatomical measurements (body with underwear) without tightening, keeping the measuring tape taut. Note: in case you want to wear of the gowns already with the clothing underneath take the measurements already dressed. **2)** If there is a measure between 2 sizes between the measurements taken, we advise you to take the bigger one. **3)** The measurements in the table are expressed in centimeters.